



# Picnics 2024



San Diego Zoo  
Wildlife Alliance



# 2024

## Wild Picnic Packages

The following items are included in your picnic package:

*Memberships Do Not Apply*

**70 Person Minimum**



- 1-Day Pass for your Guests on the Day of the Picnic
- Unlimited Access to All Regularly Scheduled Public Shows and Attractions:
  - ZOO** – Guided Bus Tour, Skyfari Aerial Tram, and Express Bus
  - SAFARI PARK** – Africa Tram
- General Parking Included
- Unlimited Iced Tea, Lemonade, and Water Station
- Private Lunch Venue from 11:00am-2:00pm
- Catered Buffet Style Meal (Service Time Based on Group Size)
- 1-Day Pass to Sister Park for All Attendees. Valid up to 30 Days Following Event Date
- \$10 Off New Annual Membership for Adults or Children on the Day of the Picnic

San Diego Zoo Wildlife Alliance is a not-for-profit organization. Booking your event with us helps support our mission of saving species worldwide and leading the fight against extinction.

## COOKOUT

Water, Iced Tea & Lemonade Station

Roasted Baby Red Potato Salad with Corn, Peppers, and Paprika Vinaigrette (Vegan/GF)

Field Greens Salad with Seasonal Garden Greens, Red Cabbage, Shredded Carrots, Cherry Tomatoes, Ranch and House Vinaigrette (Veg)

Traditional Caesar Salad with Classic Caesar Dressing

Grilled Angus Beef Hamburgers (GF)

Black Bean Chipotle Burger (Vegan)

All-Beef Hot Dogs (GF)

Thick and Sticky Baked Beans (Veg/GF)

Creamy Cheddar Macaroni & Cheese (Veg)

Hamburger & Hot Dog Buns

Lettuce, Tomato, Onion, Pickles, and Sliced Jack and Cheddar Cheeses (Veg)

Mayonnaise, Mustard and Ketchup (Veg)

Freshly Baked Chocolate Chip Cookies (Veg)

\$77/Adult For Groups Under 1000

\$74/Adult For Groups 1000+

\$68/Child (Ages 3-11)

## ALOHA BBQ

Water, Iced Tea & Lemonade Station

Hawaiian Sweet Rolls with Creamery Butter

Creamy Maui Macaroni Salad (Veg)

Island Mixed Green Salad with Mango, Mandarin Oranges, Red Bell Pepper, Red Cabbage, and Fiji Blood Orange Vinaigrette (GF/Vegan)

Roasted Huli Huli BBQ Chicken (GF)

Grilled Hawaiian Short Ribs (GF)

Mixed Vegetable Stir Fry with Broccoli, Bell Peppers, Onions, Ginger, Zucchini, Carrots, Baby Corn, Water Chestnut, Snow Peas and Bean Sprouts (Vegan/GF)

Fried Rice with Carrots, Bell Peppers, Pineapple & Green Onions (Vegan/GF)

Freshly Baked Chocolate Chip Cookies (Veg)

\$85/Adult For Groups Under 1000

\$82/Adult For Groups 1000+

\$68/Child (Ages 3-11)

## BAJA TACO BAR

Water, Iced Tea & Lemonade Station

Traditional Caesar Salad with Classic Caesar Dressing

Pollo Asado: Citrus Marinated Chicken

Tijuana Style Carne Asada: Traditional Marinated Steak

Papas con Chile y Cebolla: Potatoes with Peppers and Onions (Vegan/GF)

Frijoles Puercos: Beans with Chorizo, Onions, Garlic, and Peppers

Arroz a la Mexicana: Rice with Tomatoes, Garlic, Onions, Corn, Peas and Carrots

Corn Tortillas & Flour Tortillas

Salsa Roja, Shredded Cabbage, Sour Cream & Cotija Cheese (Veg)

Freshly Baked Chocolate Chip Cookies (Veg)

\$88/Adult For Groups Under 1000

\$85/Adult For Groups 1000+

\$68/Child (Ages 3-11)

## WESTERN

Water, Iced Tea & Lemonade Station

Cornbread Muffins with Creamery Butter (Veg)

Field Greens Salad with Seasonal Garden Greens Red Cabbage, Shredded Carrots, Cherry Tomatoes, Ranch and House Vinaigrette (Veg)

Southwest Pasta Salad with Black Beans, Corn, Peppers, Tomatoes, Red Onions and a Lime Vinaigrette (Vegan)

Chopped Texas Smoked Brisket with House BBQ Sauce (GF)

Honey Glazed BBQ Chicken (GF)

Black Bean Chipotle Burger (Vegan)

Thick & Sticky Baked Beans (Veg/GF)

Creamy Cheddar Macaroni & Cheese (Veg)

Sandwich Buns

Mayonnaise, Mustard & Ketchup

Freshly Baked Chocolate Chip Cookies (Veg)

\$89/Adult For Groups Under 1000

\$86/Adult For Groups 1000+

\$68/Child (Ages 3-11)

## PICNIC MENU ENHANCEMENTS

### BUFFET ENHANCEMENTS

Lettuce, Tomato, Pickles	\$3/person
Hot Dogs with Hot Dog Buns	\$8/person
Crispy Applewood Smoked Bacon	\$8/person
Kahlua Pulled Pork (GF)	\$11/person
Tri-Colored Tortilla Chips and Salsa Roja	\$11/person
Fresh Guacamole (Vegan)	\$13/person
Tri-Colored Tortilla Chips with Salsa Roja & Fresh Guacamole	\$24/person
Gluten Free Buns	\$84/dozen

### SWEET SELECTIONS

Assorted Individual Popsicles	\$6/person
Assorted Individual Ice Cream Cups	\$7/person
Seasonal Fresh Cut Fruit Display	\$18/person
Freshly Baked Chocolate Brownies	\$45/dozen
Freshly Baked Blondies	\$45/dozen
Freshly Baked Lemon Bars	\$53/dozen
Rice Crispy Bars	\$33/dozen

### BEVERAGES

Unlimited Soda Bar	\$8/person
Mike Hess (Rotating Option): Approx 125 Servings	\$600/keg
Bud Light: Approx 125 Servings	\$490/keg
Bottled Wine: Sauvignon Blanc, Pinot Noir, Rose	\$44/bottle

### SOUVENIRS

*Enhance Your Event! All Souvenirs Below Apply Towards Your Food and Beverage Minimum.*

San Diego Zoo/Safari Park Logo Reusable Lunch Bag	\$4/person
San Diego Zoo/Safari Park Logo Kids Plastic Cup with Straw	\$8/person
28 oz. Souvenir Handled Cup & Straw (Free Refills on Event Day)	\$14/person
SDZWA Aluminum Pint Cup (Free Refills on Event Day)	\$15/person

## PICNIC EXPERIENCES and ENTERTAINMENT OPTIONS

### WILDLIFE ENCOUNTER – 45 MINUTES

**\$2,000.00**

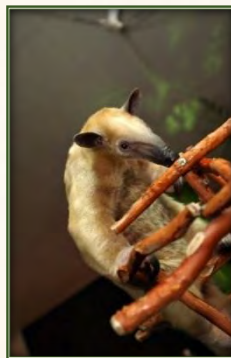
Nothing completes a special event like a furry, feathered or scaly guest of honor. Experience an up-close encounter with some of the rarest and most dynamic species that will inspire and amaze even the most educated animal enthusiast. Enjoy meeting our professional wildlife care staff and learn about wildlife, ecosystems, and the San Diego Zoo Wildlife Alliance conservation efforts. Our wildlife animal ambassadors include a variety of birds, reptiles and mammals.

\*This experience is available at select venues\*

### WILDLIFE CARE SPECIALIST TALK – 30 MINUTES

**\$750.00**

Hear from the people who work with wildlife on a daily basis – guests will have the ability to ask questions and interact with our wildlife care specialists!



### Art Shoppe

Including our talented artists and artisans will provide a myriad of options to custom tailor your event and help insure a memorable experience.

#### Brush Art Artist

One Artist Paints Approx. 8-10 Full Brush Art Names per Hour

**\$475/two hours**

Additional Hours: \$225/hour

#### Caricature Artist

One Artist Draws Approx. 20-25 Caricatures per Hour

**\$475/two hours**

Additional Hours: \$225/hour

#### Face Paint Artist

One Artist Paints Approx. 25-35 Faces per Hour

**\$475/two hours**

Additional Hours: \$225/hour

#### Henna Tattoo Artist

One Artist Draws Approx. 25-35 Henna Designs per Hour

**\$525/two hours**

Additional Hours: \$225/hour

*\*Subject to Availability; May Not be Available During Peak Days.*



## ZOOFARI PARTY AREA

The Ultimate Event Destination. Large outdoor venue with striking ambient large umbrella lit trees; vibrant and festive perimeter décor.

Seating & Dining: 60" Round Tables Accompanied by Cross Back Chairs

Provided: Seating up to 700 Guests, One Umbrella Per Two Tables  
(Additional Rentals Recommended)

Pricing: F&B Minimums and Room Rentals Apply, Varies by date



## **TREETOPS ROOM**

This venue captures the simplicity and serenity of life in Africa with its floor to ceiling windows plus a private patio and waterfall.

Seating & Dining: 72" Round Tables Accompanied by Padded Banquet Chairs

Provided Seating up to 100 Guests

Pricing: F&B Minimums and Room Rentals Apply, Varies by date



## **SABERTOOTH GRILL AT ELEPHANT ODYSSEY**

This expansive terrace offers a magnificent view and one-of-a-kind dining opportunity for your celebration. Lush landscaping and eye level views of our elephants will have guests trumpeting about the experience for years to come.

Seating & Dining: Existing Square Tables Accompanied by Slated Aluminum Chairs

Provided Seating up to 300

Pricing: F&B Minimums and Room Rentals Apply, Varies by date





## HUNTE NAIROBI PAVILION

On the edge of Nairobi Village, this spaces dramatic and open-air destination with 35-foot vaulted ceiling, adorned with ambient decorative lighting, is perfect for the larger gathering.

Seating & Dining: 60" Round Tables  
Accompanied by Wicker Armed chair

Provided Seating up to 240 Guests

Pricing: F&B Minimums and Room Rentals Apply,  
Varies by date



## MAWAZO TERRACE

Enchanting views of the San Pasqual Valley can be found at this secluded vista. This outdoor venue is conveniently located by Mawazo Jungle Gym.

Seating & Dining: Existing Square Tables  
Accompanied by Deck Chairs

Provided Seating up to 100 Guests

Pricing: F&B Minimums and Room Rentals Apply, Varies by date





## KIJAMII OVERLOOK

Panoramic views of the Safari Park's Asian and African plains where giraffe, rhinos, and gazelles roam throughout the hillside. Unique African Lodge inspired facility complete with fire pit.

Seating & Dining: Choice of Farm Style or Rounds (based on guest count)  
Accompanied by Cross-Back Chairs

Provided Seating up to 250 Guests

Pricing: F&B Minimums and Room Rentals Apply,  
Varies by date



## MOMBASA PAVILION

Lush, tropical foliage, harmonious waters and rare birds encompass this intimate open-air African style lodge

Seating & Dining: Round Tables  
Accompanied by Wicker Armed chair

Provided Seating up to 140 Guests

Pricing: F&B Minimums and Room Rentals Apply,  
Varies by date





# Capacity Chart

Capacities listed may vary based on event specific set-up

\*Rental of additional chairs and tables may be required to meet maximum set up\*

Venue Name	Square Ft	Dimensions	Seating Provided	Maximum Capacity
San Diego Zoo - Zoofari Party Area	20,000		700	1000*
San Diego Zoo - Treetops Room	2,415	69x35	100	100
San Diego Zoo - Sabertooth Grill	12,000		300	300
San Diego Zoo Safari Park - Hunte Nairobi Pavilion	7,170	45' Diameter	240	240
San Diego Zoo Safari Park - Mawazo Terrace	2,080	80x26	100	100
San Diego Zoo Safari Park - Kijamii Overlook	3,135	-	250	250
San Diego Zoo Safari Park - Mombasa Pavilion	2,925	30x90	140	140

San Diego Zoo & San Diego Zoo Safari Park Buyout Options Available

## Extra Services & Rental Items

8' Table with Floor- Length Linen	\$77/table
Round Table with Floor Length Linen and Seating for 10	\$72/set
Round High Belly Bars with Linen	\$57/table
Round Cocktail Table with House Linen	\$46/table
Standing Heaters	\$150 each
Black or White Resin Chairs	\$17 each
Umbrellas	\$150 each

# Catering Policies and Procedures

## ADMISSION

In order to utilize catering facilities at the Premises, an admissions fee per attendee is required and included in your package price. SDZWA membership, military passes, prepaid tickets and/or discount coupons do not apply to Special Events.

## FOOD AND BEVERAGE MINIMUMS, BAR MINIMUMS & ROOM RENTALS

Each facility has a minimum Food and Beverage expenditure requirement. This minimum is met through the purchase of the food and beverage and your package price only. Entertainment, rental, décor, surcharges, wildlife encounters, labor fees and/or sales tax do not apply towards this minimum. If the food and beverage minimum is not met, an amount equal to the deficit plus applicable sales tax will be charged to the Client.

Any deviation and/or reductions in program do not alter the Client's responsibility for full payment of this minimum.

## GROUP SIZE MINIMUM

70 guest minimum will apply to admissions, tours, and beverage.

## DEPOSIT

A non-refundable deposit of is required at the time of signing the Sales Agreement in order to consider any reservation confirmed. This deposit will be applied toward the total charge for the Event.

The remaining balance as determined by the Event Order will be due ten (10) business days prior to the Event.

## FINAL GUARANTEE

A final guarantee is due no later than 10:00 am (PST) ten (10) business days prior to your event. If the final guarantee is not received within the ten (10) day specification, the estimated attendance given at contract will be used as the final billable guarantee. The Client will be invoiced for the final guaranteed attendance (food, beverage, admissions and tours) or the actual number of meals served, and entrances granted, whichever is greater.

San Diego Zoo Wildlife Alliance (SDZWA) will provide seating 3% over the guarantee up to the maximum capacity of the reserved facility San Diego Zoo Wildlife Alliance will be prepared to cook food for 3% over the guarantee as the need is determined. If the actual number of guests at an event exceeds 3% of the guarantee, every effort will be made to provide meals, but we reserve the right to substitute food items and not guaranteed.

## VENUE COORDINATOR

The SDZWA Event Coordinator will serve as liaison between SDZWA and the Client for all needs. Any arrangements/requests/communication must be made directly with said Event Coordinator.

The SDZWA Event Coordinator must approve all decorations, themes and entertainment at least one (1) month prior to the Event. The SDZWA reserves the right to refuse any decoration themes or entertainment that may be considered a health or safety problem or cause damage to the Premises.

## RESTRICTED

For the safety of our guests and wildlife collection, items not allowed on Premises include but are not limited to: any animals other than service animals, drones, balloons, balls, Frisbees, hacky sacks, hula hoops, bicycles, scooters, tricycles, riding toys of any kind, bug nets, plastic bug keeper containers, cap guns, noisemakers, toys that make loud noises, fireworks, glass bottles, jump ropes, knives, weapons, lawn chairs, plants, roller blades, skates, skateboards, roller shoes, throw away lids and straws, AM/FM radios, scanners, portable TVs, laser pointers, whistles and yo-yos.

## POWER

All power requirements must be on file with the SDZWA Event Coordinator at least one (1) month prior to Event Date. Extensive power needs are subject to additional charges.



# Catering Policies and Procedures

## **MUSIC**

Music sound levels cannot exceed a maximum Sustained decibel level of 80. SDZWA will monitor. If sustained reading exceeds maximum, client will be immediately notified and will be expected to reduce the volume. Any additional notifications after the first offense will incur a \$500 fine per notice. More than 3 notices, power source to music will be powered down for remainder of the event.

Loud percussions (i.e. marching band) and steel drum bands not allowed for animal welfare.

## **SMOKING**

San Diego Zoo and Safari Park is a non-smoking and non-vaping facility.

## **WEATHER**

Inclement weather options are available for an additional cost and are not included in minimum charges.

## **LIGHTING**

Outdoor venues have basic lighting. Thematic lighting is available at an additional charge. Entertainment, buffets, and presentation requirements will affect capacities.

## **CONFIRMATION OF SPACE**

Event space may be confirmed with a signed sales agreement and deposit as early as eighteen (18) months in advance. All dates are subject to approval from our Sales Department.

## **EVENT SCHEDULES/TIMING**

The client agrees to conform to the specifications of the guaranteed Event Order regarding arrival, meal service, entertainment and departure schedule. Client will be invoiced for any expenses incurred as a result of client's failure to comply with the contracted specifications listed in the Event Order. Groups that are on the premises after 11 p.m. will be charged a late fee of \$1,000.00 per hour, or any portion thereof unless otherwise contracted. All groups must depart by 12 midnight.

Client has access to venue one hour prior to event. Extensive set up time requests may be available with an additional fee.

Event attendees are restricted to contracted venue after operating hours.

## **DÉCOR**

All decorations, theming and entertainment must be approved by the Event Coordinator at least (3) weeks prior to the event.

San Diego Zoo Wildlife Alliance reserves the right to refuse any decoration, theming, lighting or entertainment that may be considered a health or safety problem for the wildlife or cause damage to San Diego Zoo Wildlife Alliance property.

## **TOURS**

Tour pricing available only in conjunction with a private catered event.

Alternate routes can be arranged for guests with mobility impairments. Arrangements must be made 4 weeks in advance.

A fee will apply for cancelling any scheduled tour, please refer to your Sales Specialist for Cancellation Policy.

A Late Fee of \$180 will be incurred for groups arriving more than 30 minutes late to their scheduled tour time.

Select tours may not be available during peak hours, or operating hours, please refer to your Sales Specialist for more information.

## **PRICING SUBJECT TO CHANGE**

All food, beverage, tours and entertainment are subject to pricing changes. Client will be notified prior to any pricing changes.

# Catering Policies and Procedures

## FOOD SERVICE

Requests for special dietary restrictions must be made 4 weeks in advance, if not sooner. The kitchen will make reasonable efforts to accommodate such requests.

Actual menu breakdowns of number of adults and number of children (ages 3-11) are required at the time of final guarantee, ten (10) business days prior to the event.

One buffet table with two serving lines will be set up for each 100 guests as space allows. Recyclable serviceware is included.

### Buffet Service Time

90 Minutes (50-699 guests)

2 hours (700-1000 guests)

2 and a half hours (1001-1999 guests)

3 hours (2000+ guests)

An extension of actual service times is subject to additional labor fees, \$7/person per hour, based on venue availability.

## BEVERAGE SERVICE

All beverage service will be provided by SDZWA and is subject to the regulations of the Alcoholic Beverage Control Board of California. We reserve the right to refuse service to anyone.

Non-Alcoholic Beverages (Water, Lemonade & Iced Tea Station) will be served for full contracted time in venue, unless otherwise noted.

One bartender for every 75 guests is provided, based on a maximum of four (4) service hours.

Additional service time is available at \$155/hour, per bartender, per location.

Bars relocating to a second locations will incur a relocation fee of \$155 per bar.

Wine corkage fees (\$38/750 mL bottle).

Labor fees are not considered part of the bar guarantee.

## TICKETING

Tickets and wristbands will be sent in advance to client for distribution. Client is to return any unused tickets and/or wristbands to the coordinator on event day. Missing tickets/wristbands are subject to additional charges. Guests must retain their 1-day Pass to use their 2nd day return pass to our sister location (San Diego Zoo or San Diego Zoo Safari Park). The 1-day Pass must be scanned at the turnstiles on the day of the picnic to be valid when returning for the 2nd day at our sister location.