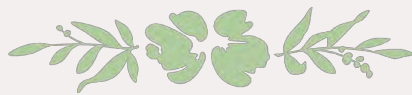




**San Diego Zoo**

## **ADMISSIONS & VENUES GUIDE 2024**

Event Sales Department  
Post Office Box 120551  
San Diego, CA 92112-0551  
[events.sdzwa.org](https://events.sdzwa.org)



## 2024 Private Catered Event Admission

In order to utilize Catering Facilities at the San Diego Zoo, an Admissions Fee per attendee is required. Memberships do not apply.

### 1-DAY PASS

Includes all-day admission, Guided Bus Tour, Kangaroo Express Bus, Skyfari Aerial Tram, and all public animal shows and exhibits as scheduled during operating hours.

Catered Event Attendee

**ADULT**      **CHILD**

**\$38**

**\$28**

Retail

**\$74**

**\$64**

### EVENING ENTRY

For Catered Groups entering grounds after 4:00pm. Includes admission, Guided Bus Tour, Kangaroo Express Bus & Skyfari Aerial Tram, and all public animal shows and exhibits as scheduled during operating hours.

**ADULT**      **CHILD**

**\$18**

**\$18**

## Private Event - Special Experience Options

### WILDLIFE ENCOUNTER AT WEGEFORTH BOWL – 45 MINUTES

**\$2000**

Nothing completes a special event like a furry, feathery, or scaly guest of honor. Experience an up-close encounter with some of the rarest and most dynamic species that will inspire and amaze even the most educated animal enthusiast. Enjoy meeting our professional wildlife care staff and learn about wildlife, ecosystems, and the San Diego Zoo Wildlife Alliance conservation efforts. Our wildlife animal ambassadors include a variety of birds, reptiles, and mammals.

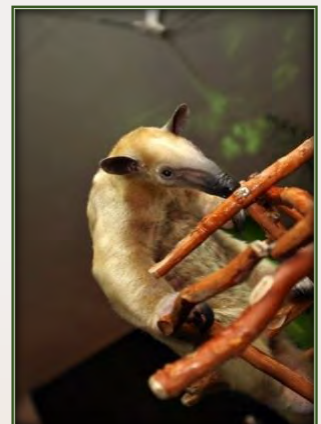
Private Encounter Times: 11:00am, 4:00pm, 5:00pm, 6:00pm, & 7:00pm

\*pending availability

### WILDLIFE CARE SPECIALIST TALK – 30 MINUTES

**\$750**

Hear from the people who work with wildlife on a daily basis – guests will have the ability to ask questions and interact with our wildlife care specialists!



## PRIVATE GUIDED BUS TOUR

Join us for a narrated, round-trip 35-minute adventure through Zoo grounds on our double-decker buses and find out more about how we're saving species worldwide, and what you can do as an ally for wildlife.

Pricing: \$750 Per Bus

Recommended Time: Daylight Hours  
(Not Available From 11:00am – 2:00pm)

Duration: 35 Minutes

Boarding Location: Guided Bus Tour Unloading Dock

All Ages

Up to 80 Guests per Bus



## SPECIAL TOUR

Includes a private guided bus tour with a visit to an animal habitat area that is not accessible by the general public.

Pricing: \$40/Person

Recommended Time: Daylight Hours  
(Not Available After 3:30pm)

Duration: 90 Minutes

Boarding Location: Custom

All Ages

Up to 160 Guests at Any One Time

## BOTANICAL TOUR

Embark on a private guided bus tour that highlights our botanic gardens and all the wonderful plant species in the San Diego Zoo's collection. Learn about our conservation work with plants, as well as the role plants play in animal nutrition. Along the bus route guests will disembark and enjoy a private guided tour of our orchid house by one of our knowledgeable experts.

Pricing: \$40/Person

Duration: 90 Minutes

Tour Time Options (Based on Availability – Rain or Shine):

9:30am-11:00am

10:00am-11:30am

10:30am-12:00pm

11:00am-12:30pm

Boarding Location: Guided Bus Tour Unloading Dock  
Unloading Location: Orchid House

All Ages

Up to 80 Guests

## SUNSET STROLL

Guests embark on a guided walking tour highlighting the Zoo's nocturnal animals and sharing unique stories about what happens in the Zoo after dark! Attendees are encouraged to wear walking shoes and may be transported via bus for a portion of the experience.

Pricing: \$25/Person

Recommended Time: Daylight Hours

Duration: 1 Hour

Boarding Location: Custom

All Ages

Up to 250 Guests at Any One Time

## ZOOPER TEAM CHALLENGE

For the competitive and independent group, this high energy scavenger hunt requires teams to work together deciphering a series of clues, which lead them to habitats all around the Zoo. Every team receives a different version and time is of the essence! Teams must develop a strategy for completing the challenge in the allotted time, explore zoo habitats, and examine photos carefully to solve each clue. Bonus points are offered to teams that spot unique animal behaviors, dive into zoo trivia, or take memorable photos of their group. Prizes are awarded. Walking shoes are highly recommended.

Pricing: \$25/Person

Recommended Time: Daylight Hours Up to One Hour Prior to Sunset

Duration: Two Hours

Boarding Location: Custom

All Ages

Up to 120 Guests at Any One Time

---

## ZSI – ZOO SCENE INVESTIGATORS

Wildlife is disappearing and forensic evidence has been found... Can your team help solve the 'crime' on hand? Groups must work together to ID the mystery clues and use the information provided by surprise professional actors they encounter along the way. This fascinating team builder uses actual artifacts and a bit of humor to help educate attendees on a very serious worldwide animal crisis. Walking shoes are highly recommended.

Pricing: \$30/Person

Recommended Time: Prior to Sunset (Not Available During Operating Hours)

Duration: 90 Minutes

Boarding Location: Custom

All Ages

Up to 120 Guests at Any One Time

## Zoofari Party Area – Recommended up to 1,000 Guests

The Ultimate Event Destination. Large outdoor venue with striking ambient large umbrella lit trees; vibrant, and festive perimeter décor.

Seating & Dining: 60" Round Tables  
Accompanied by Crossed Back Chairs

Availability: Breakfast, Lunch, Dinner

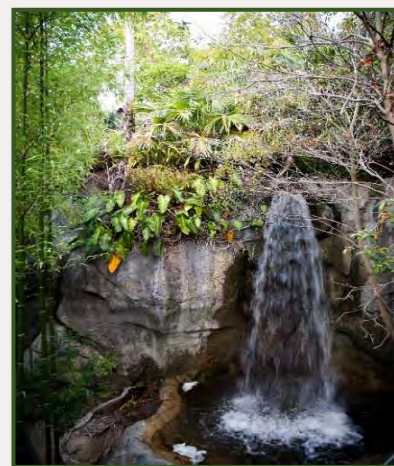


## TREETOPS ROOM – Recommended up to 100 Guests

This venue captures the simplicity and serenity of life in Africa with its floor to ceiling windows, plus a private patio and waterfall.

Seating & Dining: 72" Round Tables Accompanied by Padded Banquet Chairs

Availability: Breakfast, Lunch, Dinner



## **SYDNEY'S OUTBACK AT URBAN JUNGLE – Recommended up to 500 Guests**

A venue like no other! Stroll throughout Urban Jungle to view Giraffes, Rhinos, Koalas, and more! Outdoor venue featuring up-lit trees and colorful umbrellas.

Seating & Dining: 42" Round Tables

Accompanied by Deck Chairs

Availability: Dinner



## **SABERTOOTH GRILL AT ELEPHANT ODYSSEY – Recommended up to 300 Guests**

This expansive terrace offers a magnificent view and one-of-a-kind dining opportunity for your celebration. Lush landscaping and eye-level views of our elephants will have guests trumpeting about the experience for years to come. Venue requires \$8/Person Round Trip Shuttle.

Seating & Dining: Choice of 42" Square Tables or 72" Square Tables (based on guest count)

Accompanied by Slated Aluminum Chairs

Availability: Dinner



## Capacity Chart

Room Name	Square Ft	Dimensions	Reception	Buffet	Plated	Buffet / Dance	Theater
Zoofari Party Area	20,000		1200*	1000*	300	650*	1000*
Treetops Room	2,415	69x35	150*	100	120	80	150*
Treehouse Decks with Treetops Room	3,222	-	600	400*	120	400*	150*
Sabertooth Grill	12,000	100x120	320	300	170	170	-
Elephant Odyssey with Sabertooth Grill	-	-	700*	-	-	-	-
Urban Jungle with Sydney's Grill	-	-	800*	500*	-	500*	-

San Diego Zoo Buyout Available

*Capacities listed may vary based on event specific set up.*

*\*Rental of additional chairs and tables may be required to meet maximum set up.*



# Catering Policies and Procedures

## **ADMISSION**

In order to utilize catering facilities at the premises, an admissions fee per attendee is required. SDZWA membership, military passes, prepaid tickets and/or discount coupons do not apply to special events.

## **FOOD AND BEVERAGE MINIMUMS, BAR MINIMUMS & ROOM RENTALS**

Each facility has a minimum Food and Beverage expenditure requirement. This minimum is met through the purchase of the food and beverage only. Entertainment, rental, décor, admissions, surcharges, wildlife encounters, labor fees and/or sales tax do not apply towards this minimum. If the food and beverage minimum is not met, an amount equal to the deficit plus applicable sales tax will be charged to the client.

Any deviation and/or reductions in program do not alter the client's responsibility for full payment of this minimum.

## **GROUP SIZE MINIMUM**

70 guest minimum will apply to admissions, tours, food (except as defined for food station minimums at 100 guests) and beverage.

## **DEPOSIT**

A non-refundable deposit is required at the time of signing the Sales Agreement in order to consider any reservation confirmed. This deposit will be applied toward the total charge for the event.

The remaining balance as determined by the Event Order will be due ten (10) business days prior to the event.

## **FINAL GUARANTEE**

A final guarantee is due no later than 10:00 am (PST) ten (10) business days prior to your event. If the final guarantee is not received within the ten(10) day specification, the estimated attendance given at contract will be used as the final billable guarantee. The client will be invoiced for the final guaranteed attendance (food, beverage, admissions and tours) or the actual number of meals served, and entrances granted, whichever is greater.

San Diego Zoo Wildlife Alliance (SDZWA) will provide seating 3% over the guarantee up to the maximum capacity of the reserved facility San Diego Zoo Wildlife Alliance will be prepared to cook food for 3% over the guarantee as the need is determined. If the actual number of guests at an event exceeds 3% of the guarantee, every effort will be made to provide meals, but we reserve the right to substitute food items and not guaranteed.

## **VENUE COORDINATOR**

The SDZWA Event Coordinator will serve as liaison between SDZWA and the Client for all needs. Any arrangements/requests/communication must be made directly with said Event Coordinator.

The SDZWA Event Coordinator must approve all decorations, themes and entertainment at least one (1) month prior to the event. The SDZWA reserves the right to refuse any decoration themes or entertainment that may be considered a health or safety problem or cause damage to the premises.

## **RESTRICTED**

For the safety of our guests and wildlife collection, items not allowed on premises include but are not limited to: any animals other than service animals, drones, balloons, balls, Frisbees, hacky sacks, hula hoops, bicycles, scooters, tricycles, riding toys of any kind, bug nets, plastic bug keeper containers, cap guns, noisemakers, toys that make loud noises, fireworks, glass bottles, jump ropes, knives, weapons, lawn chairs, plants, roller blades, skates, skateboards, roller shoes, throw away lids and straws, AM/FM radios, scanners, portable TVs, laser pointers, whistles, and yo-yos.

## **POWER**

All power requirements must be on file with the SDZWA Event Coordinator at least one (1) month prior to event date. Extensive power needs are subject to additional charges.

# Catering Policies and Procedures

## **MUSIC**

Music sound levels cannot exceed a maximum sustained decibel level of 80. SDZWA will monitor. If sustained reading exceeds maximum, client will be immediately notified and will be expected to reduce the volume. Any additional notifications after the first offense will incur a \$500 fine per notice. More than 3 notices, power source to music will be powered down for remainder of the event.

Loud percussions (i.e. marching band) and steel drum bands not allowed for animal welfare.

## **SMOKING**

San Diego Zoo and Safari Park is a non-smoking and non-vaping facility.

## **WEATHER**

Inclement weather options are available for an additional cost and are not included in minimum charges.

## **LIGHTING**

Outdoor venues have basic lighting. Thematic lighting is available at an additional charge. Entertainment, buffets, and presentation requirements will affect capacities.

## **CONFIRMATION OF SPACE**

Event space may be confirmed with a signed sales agreement and deposit as early as eighteen (18) months in advance. All dates are subject to approval from our Sales Department.

## **EVENT SCHEDULES/TIMING**

The client agrees to conform to the specifications of the guaranteed Event Order regarding arrival, meal service, entertainment and departure schedule. Client will be invoiced for any expenses incurred as a result of client's failure to comply with the contracted specifications listed in the Event Order. Groups that are on the premises after 11 p.m. will be charged a late fee of \$1,000.00 per hour, or any portion thereof unless otherwise contracted. All groups must depart by 12 midnight.

Client has access to venue one hour prior to event. Extensive set up time requests may be available with an additional fee.

Event attendees are restricted to contracted venue after operating hours.

## **DÉCOR**

All decorations, theming and entertainment must be approved by the Event Coordinator at least (3) weeks prior to the event.

San Diego Zoo Wildlife Alliance reserves the right to refuse any decoration, theming, lighting or entertainment that may be considered a health or safety problem for the wildlife or cause damage to San Diego Zoo Wildlife Alliance property.

## **ZOO TOURS**

Tour pricing available only in conjunction with a private catered event.

Alternate routes can be arranged for guests with mobility impairments. Arrangements must be made 3 weeks in advance.

A fee will apply for cancelling any scheduled tour, please refer to your Sales Specialist for Cancellation Policy.

A Late Fee of \$180 will be incurred for groups arriving more than 30 minutes late to their scheduled tour time.

Select tours may not be available during peak hours, or operating hours, please refer to your Sales Specialist for more information.

## **PRICING SUBJECT TO CHANGE**

All food, beverage, tours and entertainment are subject to pricing changes. Client will be notified prior to any pricing changes.

# Catering Policies and Procedures

## **FOOD SERVICE**

Requests for special dietary restrictions must be made four (4) weeks in advance, if not sooner. The kitchen will make reasonable efforts to accommodate such requests.

### Buffet & Food Stations

90-minute service time. An extension of actual service times is subject to additional labor fees. One buffet table with two serving lines will be set up for each 100 guests as space allows. Recyclable serviceware is included.

## **BEVERAGE SERVICE**

All beverage service will be provided by SDZWA and is subject to the regulations of the Alcoholic Beverage Control Board of California. We reserve the right to refuse service to anyone.

There is a \$595 cumulative bar guarantee per bartender. If the bar guarantee is not met, the bar difference will be charged.

One bartender per 75 guests is provided, based on a maximum of four (4) service hours.

Additional service time is available at \$155/hour, per bartender, per location.

Bars relocating to a second locations will incur a relocation fee of \$155 per bar.

Grab and Go bars are limited to one specialty drink, served "wild" and "tame," charged based on guarantee or actual whichever is greater, and subject to \$155 bar set up fee.

Wine corkage fees are \$38/750 mL bottle.

Wine Service is available during plated meals. Please refer to your Sales Specialist for our wine list.

Labor fees are not considered part of the bar guarantee.